

RAY*i*OS 2

EXPERIENCE YOU DESERVE

Lightning **Fast** / Effortlessly **Easy** / Burden **Free**



Ray

RAYiOS2 is a High-Performance, affordable Intraoral Scanner that offers Outstanding Scanning Capabilities and Ease of Use for Dental Professionals

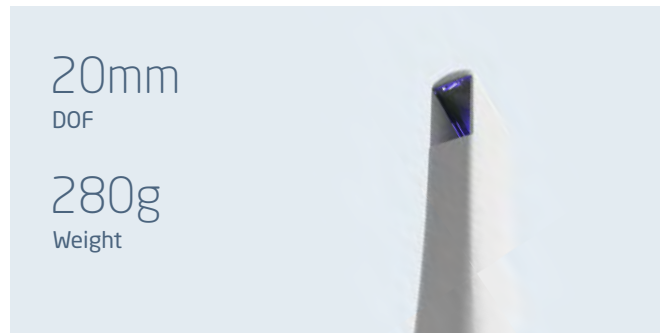
In the digital age of dental care, oral scanners are no longer an option but are necessary for accurate and efficient treatment planning. Here are the features that make RAYiOS2 the perfect intraoral scanning tool for economic alternatives to a must-have tool in today's digital dental practice



Fast & Easy Scanning

RAYiOS2 delivers 35 frames per second and a wide dimension of 14mm by 14mm, allowing quick and accurate scans with minimal interruptions.

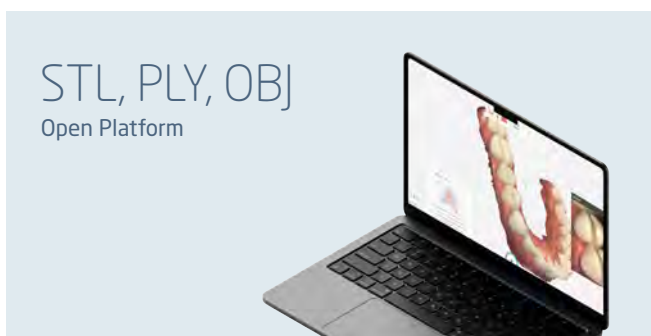
The anti-fog feature and airflow system ensure a clear scan every time, and the 'Jump scan' feature makes for faster, uninterrupted scans



Accurate Rendering of Images

With a depth of field of 20mm, RAYiOS2 provides accurate and precise rendering of images. The spray-free scanning technology ensures no interruptions, even in the presence of metal, giving you reliable and consistent results.

Burden-Free with Light Weight: Weighing in at only 280g, RAYiOS2 is lightweight and easy to handle. The ergonomic design and comfortable grip make scanning effortless and enjoyable, even for extended periods



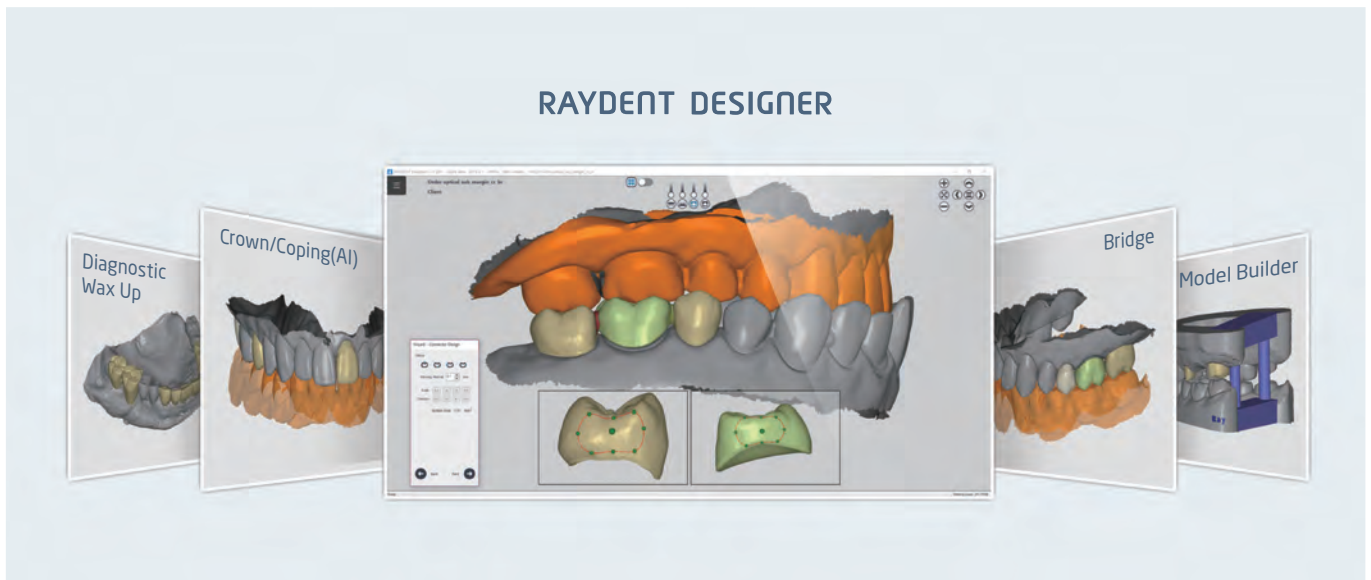
Open Ended & Friendly Platform

RAYiOS2's open system allows for STL, PLY, and OBJ data types, making it easy to integrate with existing workflows.

You can send scan data to the RAYTeams platform to any dental lab, and our platform offers LIVE Chat for seamless communication between clinics and labs. Featuring 'SMART Check', you can confirm your desired design for optimal results

RAYiOS2 is an Affordable & Reliable Solution for Dental Professionals looking to Invest in an Intraoral Scanning Tool. Our Commitment to Innovation, Accuracy, and Affordability makes us the Top Choice for Budget-Conscious Practices Worldwide

Don't Sacrifice Quality for Cost – Choose RAYiOS2 for Exceptional Scanning Capabilities and Ease of Use



RAYDENT DESIGNER

Our digital treatment plan is made simple and intuitive using RAY CAD SW, optimized for chairside solutions. RAYiOS offers an exceptional intraoral scanning experience with Raydent Designer for a seamless digital workflow

Ray

HQ. Two Sun World Building 12th Floor 221, Pangyoeyeok-ro Seongnam-si, 13494 South Korea

Tel. +82.031.605.1000 Email. ray_sales@raymedical.co.kr

www.raymedical.com