



V SERIES

V5000 / V2000 / V1000





CNC Machining Base

Along with the establishment of CNC machining base

- The quality of metal parts with standardized production is stable.
- The metal parts are much precise.
- Working efficiency is greatly improved.

V SERIES V5000 / V2000

Intelligent · Efficient · Reliable · Affordable



V5000



V2000

V5000 / V2000 | Practical and Technological Design



- Touch control panel and 5 preset memory positions

- Intelligent linkage program by only one button to control cup filling, bowl rinsing, chair position and operating light on / off.

- Cup filling and bowl rinsing time can be set accordingly.

- Anti-suction system of dynamic instrument reduces iatrogenic infection

- Instrument interlock: When one instrument is working, the others are locked safely to prevent accidental injuries and improve work efficiency.

- Interlock between instrument and chair: When instrument is taken, movement of chair is locked.



- Air break switch can easily adjust and lock the height of the instrument table



- On/Off of all the dynamic instruments can be controlled by the photoelectric sensors



- Removable silicon pad of instrument table for cleaning and sterilization

Full-featured Assistant Element

- 11 button touch control panel for assistant element can control chair position, operating light, cup filling and bowl rinsing.
- Photoelectric sensor system controlling on / off of HV suction / saliva ejector
- After HV suction handle is put back on the hanger, HV suction system will keep working for 3 more seconds to drain the contaminant inside the tubes for reducing the cross-infection.



V5000 | Comfortable Inner-track Patient Chair



The excellent Italian imitation leather makes the V5000 patient chair elegant and comfortable.

The scientific linkage design of the patient chair backrest and seat can greatly reduce the patient's feeling of stretching and squeezing when the chair is moving.

- Angle sensor ensures accurate chair position memory and no cumulative error.
- The ultrathin aluminum backrest provides board space for dentist and nurse's legs.
- Chair movement protection: safety cut-out stops the chair and backrest from moving down in the presence of obstacles. The chair or the backrest will move up a little bit to avoid unexpected harm.
- Scientific headrest design can meet the needs of different patients.



V2000 | Patient chair with ergonomic design

Extremely Comfortable

- The patient chair is ergonomically designed so that patient's weight on the chair is evenly distributed. The body can remain relaxed even after prolonged treatment.
- The patient's head, shoulders, arms, waist and legs are well supported by the wide backrest and seat.
- The seat bending angle increased: the patient remains comfortable during the treatment.
- The soft starter system makes the start and stop of the patient chair movement stable.

Convenient and Safe

- 380mm ultra low chair position which is convenient for children and the elderly.
- The installation of upholstery is convenient and simple.

High quality materials and production process

- High strength steel makes patient chair more firm and stable.
- The patient chair adopts full injection molding cover and seat lining board, which is hygienic and durable.



V1000





V1000 | Practical and reliable

- 16 buttons touch control panel for instrument table can provide 5 preset memory positions.
- Intelligent linkage program by only one button to control cup filling , bowl rinsing , chair position and operating light on / off.
- Cup filling and bowl rinsing time can be set accordingly.
- Interlock between instrument and chair: When instrument is taken, movement of chair is locked.



- Air break switch can easily adjust and lock the height of the instrument table.



- Hanging version instrument table.

V1000 Assistant Element



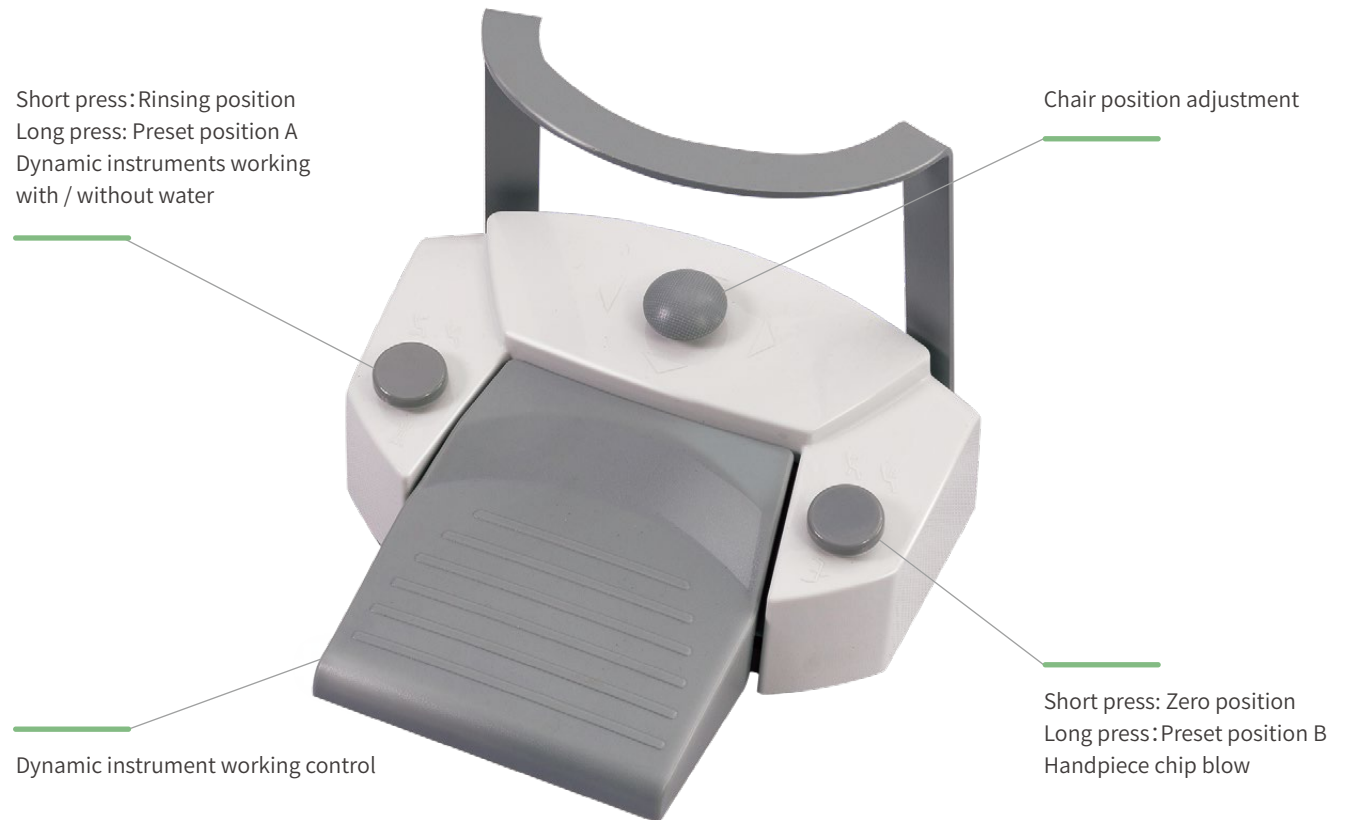
V5000 / V2000 | Multifunctional foot control

Pedal- type foot control and lever- type foot control is selectable.

Wireless foot control is optional



lever- type foot control



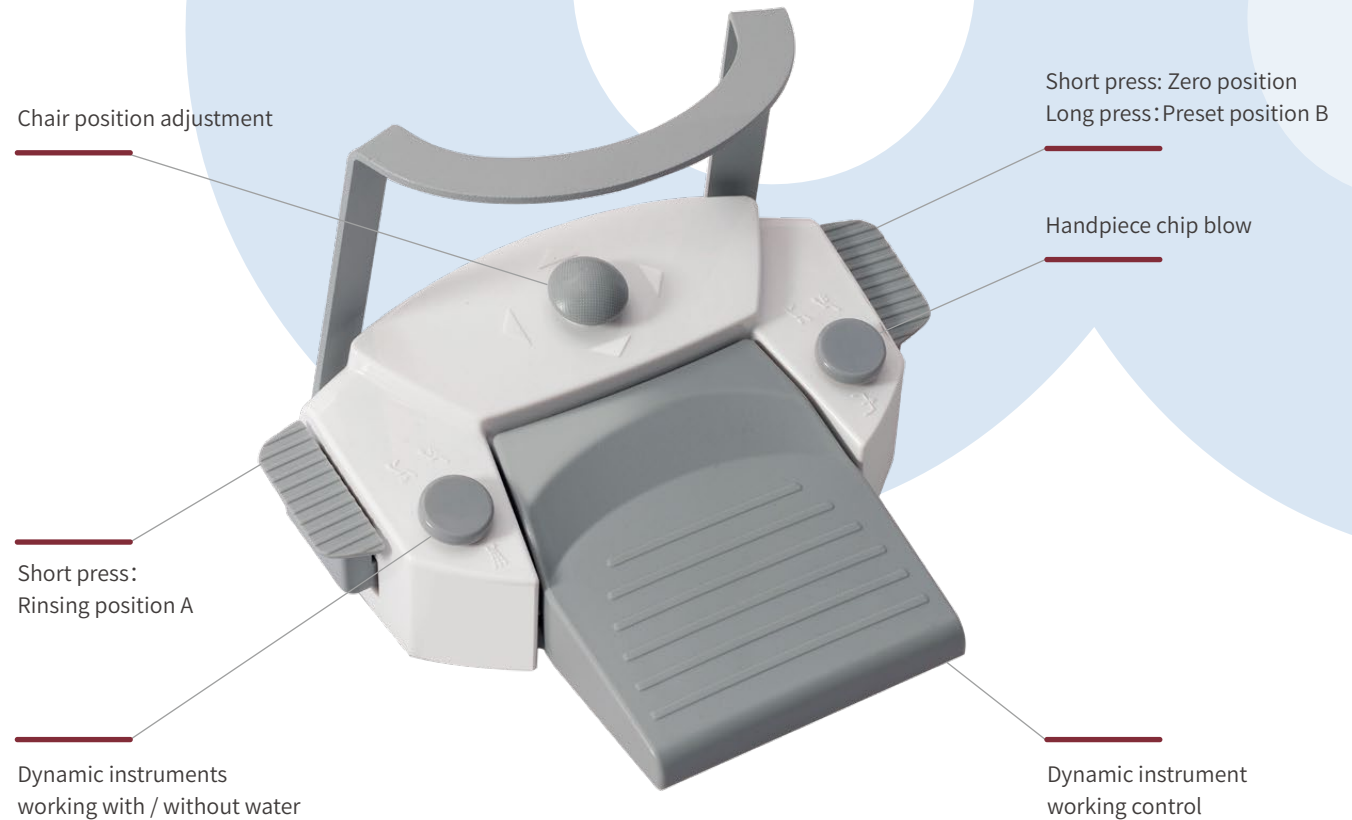
Pedal- type foot control

V1000 | Multifunctional foot control

Pedal- type foot control and lever- type foot control is selectable.



lever- type foot control



Pedal- type foot control

V SERIES | Operating Light



SIGER V1



SIGER V2



FARO EDI LED



Dental Lamp KY-P138

Brand/Model	SIGER V1	SIGER V2	FARO EDI LED	Dental Lamp KY-P138
Technology	LED	LED	LED	LED
Color Temperature	4300K	5000K	5000K	4000-5500K
Intensity	8000-30000LUX	8000-30000LUX	8000-35000LUX	10000-90000LUX
Light Spot	70 x 140 MM (@700 MM)	80 x 150 MM (@700 MM)	100 x 180 MM (@700 MM)	φ 120 MM (@ 900 MM)
Voltage	12 -17 Vac	12 -17 Vac	12 -24 Vac	12 -24 Vac
Consumption	8 VA	6 VA	8 VA	38 VA
Standard / Optional	Standard	Standard	Optional	Optional

V SERIES | Unique Hygienic Design



Tubing flushing & Disinfection system is optional



Detachable ceramic spittoon for cleaning



Detachable cup filler for cleaning



Detachable suction system for cleaning



Distilled water / tap water easy switching system

V SERIES | Large instrument table



Option for V1000



Option for V2000 / V5000

- Large instrument table can be placed for three trays, which can meet the needs of doctors and nurses to place a great number of instruments at the same time.
- It provides great convenience for realizing four-handed operation.
- Foldable instrument rack is beautiful and greatly convenient to use.
- The water / air system is separated from the circuit to reduce the failure rate.



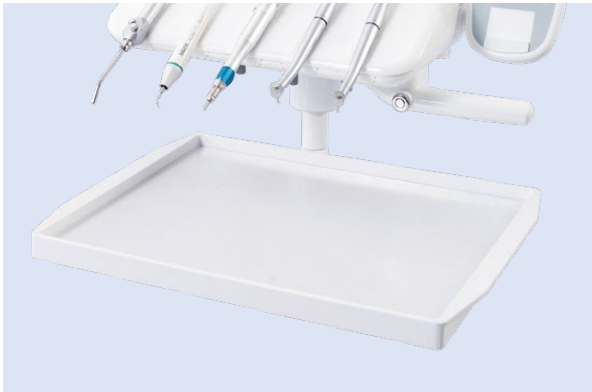
- Air break switch can easily adjust and lock the height of the instrument table.



- Optional Fast connection system for dynamic instrument provides great convenience for disassembling the pipes, cleaning and disinfection.



V SERIES | Rich configuration options



Bigger tray T2(40*30cm) is upgradeable



Rotary upper tray T3 is upgradeable



Cup filling sensor is upgradeable



3D movement headrest is optional



Right armrest is optional



Monitor bracket is optional.



Assistant stool is optional

The height of the seat and the tilt of backrest can be adjusted to meet with ergonomics. Silent swivel casters are equipped.

V1000 / V2000 | Standard upholstery color



V5000 | Italian upholstery color

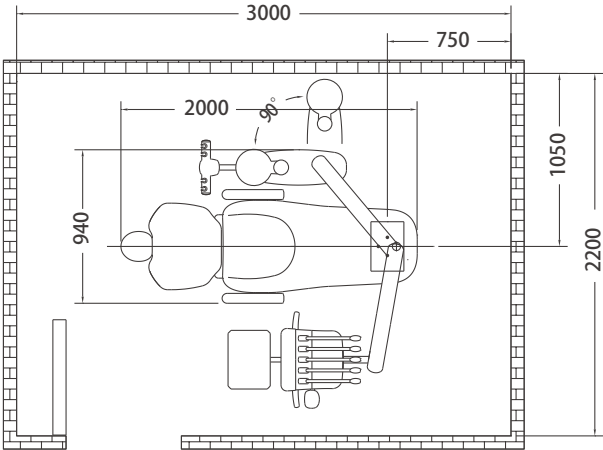


Configuration of V5000 / V2000 / V1000

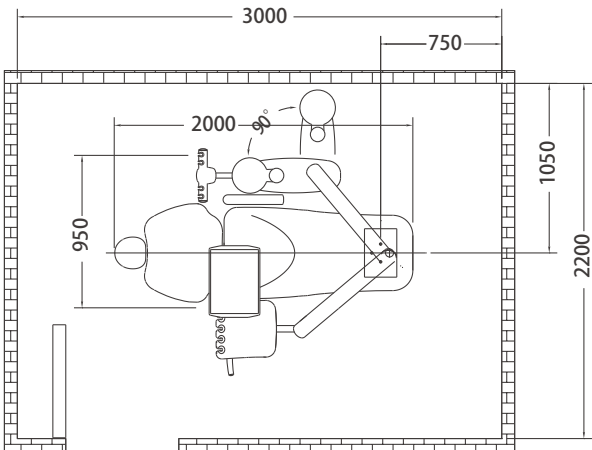
Configuration			
Pneumatic control system			✓
Simulating control system	✓	✓	
Swing-type/ hanging-type dentist element	✓	✓	✓
Touch control panel for dentist	✓	✓	
Button-type panel for dentist			✓
Built-in intraoral X-ray film viewer(LED)	✓	✓	✓
Two 4-holes tubings for turbine	✓	✓	✓
One 4-holes tubing for air motor	✓	✓	✓
One 3-way syringe for dentist	✓	✓	✓
Touch control panel for assistant	✓	✓	
Button-type panel for assistant			✓
One 3-way syringe for assistant	✓	✓	✓
One hydraulic saliva ejector	✓	✓	✓
One pneumatic HV suction	✓	✓	✓
Balance arm with air breake system	✓	✓	✓

Configuration	V5000	V2000	V1000
Multifunctional foot-pedal	✓	✓	✓
V1 LED operating light	✓	✓	
V2 LED operating light			✓
Rotatable hydro-group	✓	✓	✓
Rotatable/detachable hygienic ceramic spittoon	✓	✓	✓
Distilled water system	✓	✓	✓
Cup filling system with warm water	✓	✓	✓
Patient chair with inner-track design	✓		
Patient chair with synchronized function	✓	✓	
Safety protection for chair descending	✓	✓	✓
Safety protection for backrest descending	✓	✓	
Link chair motor	✓	✓	
Timotion chair motor			✓
Italian upholstery	✓		
Dentist stool	✓	✓	✓

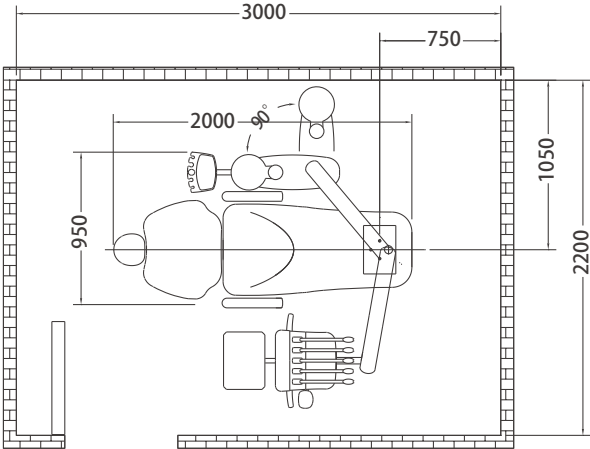
V SERIES | Dimension



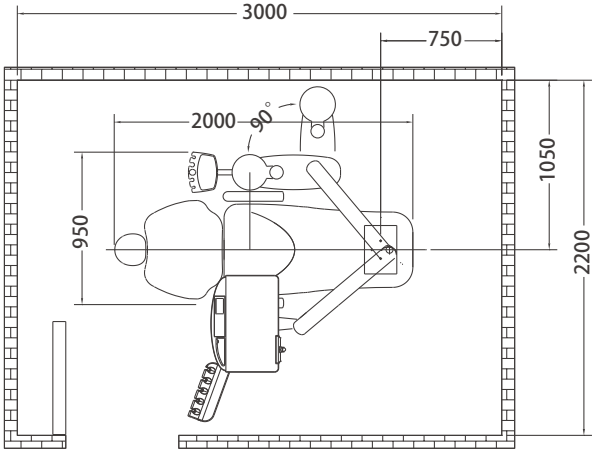
V5000



V2000

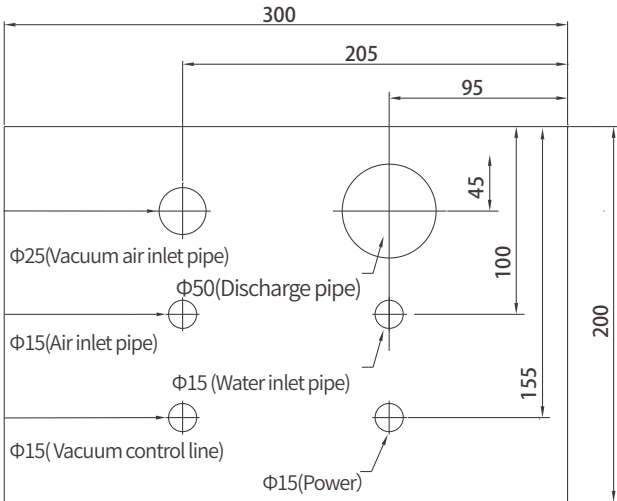
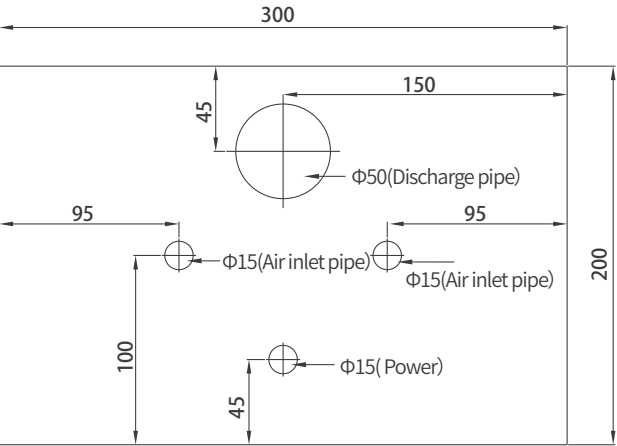


V1000



V1000 with big instrument table

Layout of floor box holes



V SERIES V5000 / V2000 / V1000



Zhuhai Siger Medical Equipment Co., Ltd

Add : Building 2, No.1, Chuangxin Yi Road, Tangjiawan Town, Zhuhai

Tel : 86-756-3881087 Fax : 86-756 - 3881028

Email : info@siger.cn Web : www.siger.cn



:Siger medical



:Siger Medical



:siger_medical